

An aerial photograph of a white inflatable boat on a body of green water. Two women in bikinis are lying on their stomachs inside the boat. The boat has a registration number 'b 16' and a small Italian flag on its side. The text 'ZAR mini' is overlaid in the top right corner.

# ZAR mini

**FUN**

**ALU**

**AIR**

**RIB**

**RIB PRO**



# ALU

## ALU 9 • ALU 10 • ALU 11 • ALU 12



	Length	Width	Depth	Bow height	Engine	Weight	Max weight	Capacity	O <sub>2</sub>	Max engine power	Recommended engine power	Max weight with motor	Storage dimensions
<b>ALU 9</b>	270 cm	185 cm	170 cm	82 cm	44 cm	ca. 30 + 20 kg*	450 kg	4	3 + 2	max 11kw (15HP)	rec. 7,4kw (10HP)	max 51 kg	125x52x32 cm + 106x69x12 cm
<b>ALU 10</b>	300 cm	212 cm	170 cm	82 cm	44 cm	ca. 30 + 25 kg*	500 kg	5	3 + 2	max 14,7kw (20HP)	rec. 11kw (15HP)	max 55 kg	125x52x32 cm + 106x62x15 cm
<b>ALU 11</b>	330 cm	240 cm	170 cm	82 cm	44 cm	ca. 34 + 29 kg*	550 kg	6	3 + 1	max 14,7kw (20HP)	rec. 14,7kw (20HP)	max 55 kg	125x52x32 cm + 106x68x15 cm
<b>ALU 12</b>	360 cm	258 cm	195 cm	99 cm	48 cm	ca. 44 + 36 kg*	750 kg	7	4 + 1	max 18,4kw (25HP)	rec. 14,7kw (20HP)	max 82 kg	155x62x35 cm + 132x70x15 cm

# ALU 13 • ALU 14 • ALU 15



CE													
<b>ALU 13</b>	390 cm	288 cm	195 cm	99 cm	48 cm	ca. 53 + 40 kg*	800 kg	8	3 + 1	max 29,4kw (40HP)	rec. 18,4kw (25HP)	max 98 kg	155x64x35 cm + 132x64x17 cm
<b>ALU 14</b>	420 cm	312 cm	195 cm	99 cm	48 cm	ca. 57 + 43 kg*	850 kg	8	3 + 1	max 29,4kw (40HP)	rec. 22,1kw (30HP)	max 98 kg	155x69x40 cm + 132x64x17 cm
<b>ALU 15</b>	460 cm	350 cm	216 cm	112 cm	52 cm	ca. 70 + 53 kg*	1000 kg	10	6 + 1	max 29,4kw (40HP)	rec. 22,1kw (30HP)	max 98 kg	166x70x42 cm + 141x72x18 cm



# FUN

## FUN 6 • FUN 7 • FUN 8



CE



	Length	Width	Depth	Seat Height	Inflation Valve	Weight	Load Capacity	People	CO2	Motor Power (max)	Motor Power (rec.)	Motor Power (max)	Storage Dimensions
<b>FUN 6</b>	180 cm	-	145 cm	-	38 cm	ca. 20 kg*	200 kg	2	3	max 2,9kw (4HP)	rec. 2,2kw (3HP)	max 25 kg	115 x 55 x 35 cm
<b>FUN 7</b>	210 cm	139 cm	145 cm	69 cm	38 cm	ca. 25 kg*	300 kg	2	3	max 2,9kw (4HP)	rec. 2,2kw (3HP)	max 25 kg	115 x 55 x 35 cm
<b>FUN 8</b>	240 cm	167 cm	145 cm	69 cm	38 cm	ca. 30 kg*	350 kg	3	3	max 3,7kw (5HP)	rec. 2,9kw (4HP)	max 30 kg	115 x 55 x 35 cm



# AIR

## AIR 8 • AIR 9 • AIR 10



CE



	Length	Height	Width	Depth	Weight	Load	People	O <sub>2</sub>	Motor	Motor	Motor	Storage	
<b>AIR 8</b>	240 cm	162 cm	155 cm	75 cm	40 cm	ca. 31 kg*	350 kg	3	3 + 2	max 4,4kw (6HP)	rec. 3,7kw (5HP)	max 35 kg	120x55x30 cm
<b>AIR 9</b>	270 cm	184 cm	170 cm	82 cm	44 cm	ca. 38 kg*	450 kg	4	3 + 2	max 11kw (15HP)	rec. 7,4kw (10HP)	max 51 kg	124x53x33 cm
<b>AIR 10</b>	300 cm	206 cm	170 cm	82 cm	44 cm	ca. 42 kg*	500 kg	5	3 + 2	max 14,7kw (20HP)	rec. 11kw (15HP)	max 55 kg	125x62x30 cm



## RIB LITE (8-11)



CE



RIB 8 LITE

240 cm

160 cm

165 cm

80 cm

40 cm

ca. 34 kg\*

290 kg

3

3

max  
3,0kw (4HP)

rec.  
2,2kw (3HP)

max  
30 kg

RIB 9 LITE

270 cm

190 cm

171 cm

80 cm

43 cm

ca. 39 kg\*

340 kg

4

3

max  
4,4kw (6HP)

rec.  
3,7kw (5HP)

max  
30 kg

RIB 10 LITE

300 cm

220 cm

171 cm

80 cm

43 cm

ca. 44 kg\*

390 kg

5

max  
5,9kw (8HP)

rec.  
4,4kw (6HP)

max  
40 kg

RIB 11 LITE

330 cm

246 cm

171 cm

80 cm

43 cm

ca. 49 kg\*

420 kg

5

max  
7,4kw (10HP)

rec.  
5,9kw (8HP)

max  
40 kg

RIB

# RIB 8 DL



# RIB 9 DL



CE

240 cm	160 cm	165 cm	80 cm	40 cm	ca. 54 kg*	350 kg	3	3	max 4,4kw (6HP)	rec. 3,7kw (5HP)	max 30 kg

CE

270 cm	190 cm	171 cm	80 cm	43 cm	ca. 59 kg*	450 kg	4	3	max 11kw (15HP)	rec. 3,7kw (5HP)	max 51 kg

# RIB 10 DL



CE



300 cm



220 cm



171 cm



80 cm



43 cm



ca. 67 kg\*



500 kg



5



3



max  
14,7kw (20HP)



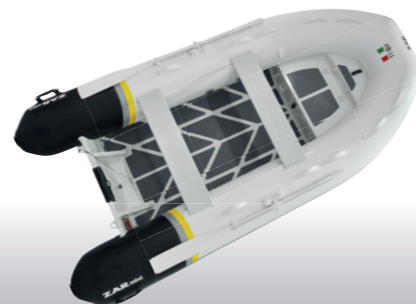
rec.  
7,4kw (10HP)



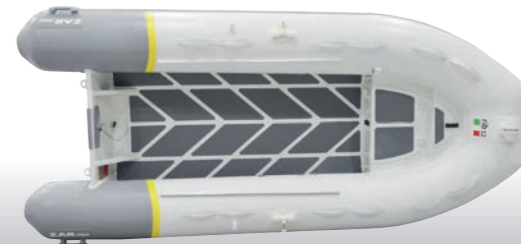
max  
55 kg



# RIB 11 DL



# RIB 12



CE

330 cm	246 cm	171 cm	80 cm	43 cm	ca. 74 kg*	550 kg	5	3	max 14,7kw (20HP)	rec. 7,4kw (10HP)	max 55 kg

CE

360 cm	272 cm	171 cm	80 cm	43 cm	ca. 79 kg*	600 kg	6	3	max 14,7kw (20HP)	rec. 7,4kw (10HP)	max 55 kg



# RIB 13



- CE
- 380 cm
- 289 cm
- 183 cm
- 88 cm
- 45 cm
- ca. 91 kg\*
- + 690 kg
- 7
- 4
- max 22,4kw (30HP)
- rec. 14,7kw (20HP)
- max 90 kg

# RIB 14



CE



420 cm



323 cm



210 cm



105 cm



51 cm



ca. 137 kg\*



850 kg



8



4



max  
37,5kw (50HP)



rec.  
22,4kw (30HP)



max  
110 kg



# RIB 15



# RIB 16 DL



CE

460 cm	363 cm	210 cm	105 cm	51 cm	ca. 171 kg*	900 kg	9	6	max 44kw (60HP)	rec. 37,5kw (50HP)	max 120 kg













CE

500 cm	399 cm	224 cm	118 cm	52 cm	ca. 250 kg*	1000 kg	10	6	max 52,5kw (70HP)	rec. 44kw (60HP)	max 170 kg

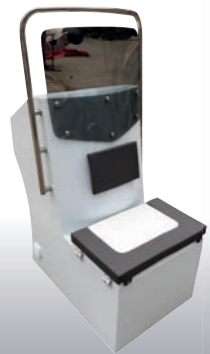


# RIB 16 SC



- CE
-  500 cm
-  399 cm
-  224 cm
-  118 cm
-  52 cm
-  ca. 320 kg\*
-  1000 kg
-  10
-  6
-  max 52,5kw (70HP)
-  rec. 44kw (60HP)
-  max 170 kg

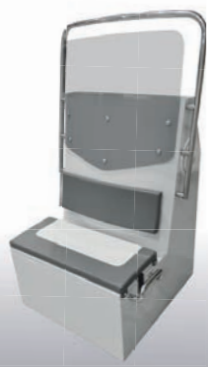
# Accessories



C1



C2



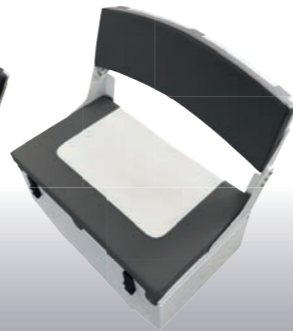
C3



C4



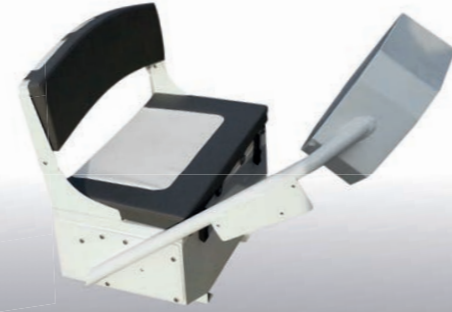
S1



S2



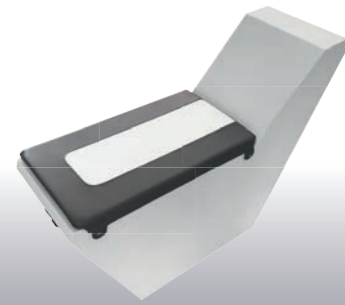
S3



SC1



SC2



SC3



# ZAR mini

ZAR mini GmbH

Gewerbegebiet Ost 31  
92353 Postbauer-Heng - Germany

Tel. +49 (0) 9188 - 307 98 96

Fax +49 (0) 9188 - 307 98 97

Email [sales@zarmini.com](mailto:sales@zarmini.com)

Web [www.zarmini.com](http://www.zarmini.com)

\* ca. +/- 20% | Technical data and equipment might change without prior notice! Hypalon boats are heavier! | Technische Daten und Ausstattung können ohne Absprache geändert werden! Hypalon Boote sind schwerer!